

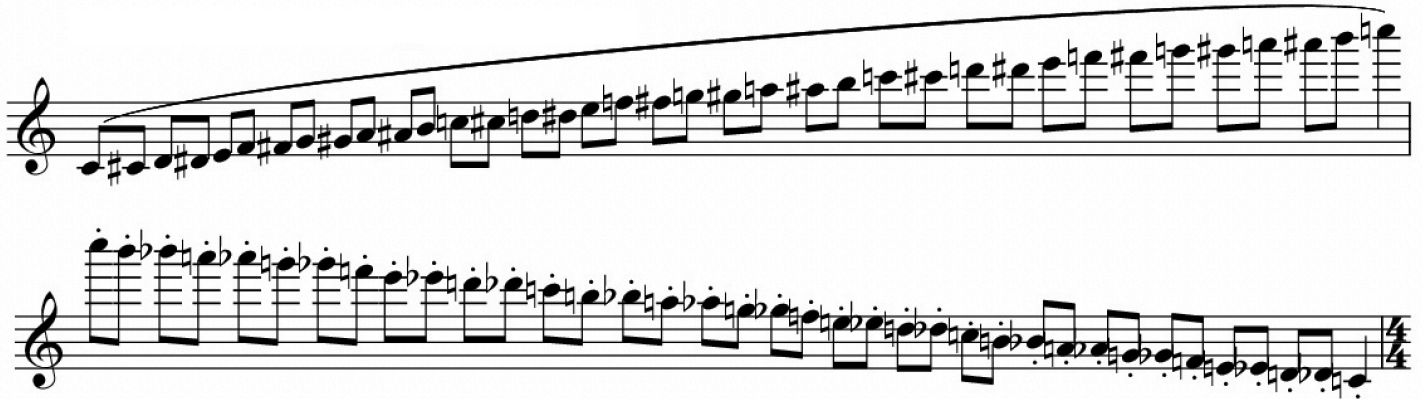
# AYCO Audition Requirements

## Flute

*In lieu of excerpts, please prepare a selection from any movement of a standard concerto, solo, or etude lasting no more than 3 minutes. Additionally, please **prepare a memorized chromatic scale and memorized major scales, as shown below.** For full instructions, visit [www.aypo.org/auditions](http://www.aypo.org/auditions)*

**Chromatic Scale** – Slur up, staccato down

**Quarter note = 120+** \*Musicians may opt for the fastest tempo at which they can comfortably prepare this scale



**Major Scales** – Legato tongue up and down

**Quarter note = 120** \*Play as written or add additional octaves as you choose

C Major

F Major

Bb Major

Eb Major

A $\flat$  Major



A $\flat$  Major scale in treble clef, starting on A $\flat$  (F $\sharp$ ). The scale consists of 12 notes: A $\flat$ , B $\flat$ , C, D, E $\flat$ , F $\sharp$ , G, A $\flat$ , B $\flat$ , C, D, E $\flat$ . The notation shows a sequence of eighth notes ascending and then descending, ending with a double bar line and a sharp sign.

D $\flat$  Major (D $\flat$  Concert)



D $\flat$  Major scale in treble clef, starting on D $\flat$  (C $\sharp$ ). The scale consists of 12 notes: D $\flat$ , E $\flat$ , F, G, A $\flat$ , B $\flat$ , C, D $\flat$ , E $\flat$ , F, G, A $\flat$ . The notation shows a sequence of eighth notes ascending and then descending, ending with a double bar line and a sharp sign.

G $\flat$  Major (G $\flat$  Concert)



G $\flat$  Major scale in treble clef, starting on G $\flat$  (F $\sharp$ ). The scale consists of 12 notes: G $\flat$ , A $\flat$ , B, C, D, E $\flat$ , F $\sharp$ , G $\flat$ , A $\flat$ , B, C, D, E $\flat$ . The notation shows a sequence of eighth notes ascending and then descending, ending with a double bar line and a sharp sign.

G Major (G Concert)



G Major scale in treble clef, starting on G. The scale consists of 12 notes: G, A, B, C, D, E, F $\sharp$ , G, A, B, C, D, E. The notation shows a sequence of eighth notes ascending and then descending, ending with a double bar line and a sharp sign.

D Major (D Concert)



D Major scale in treble clef, starting on D. The scale consists of 12 notes: D, E, F $\sharp$ , G, A, B, C, D, E, F $\sharp$ , G, A, B, C. The notation shows a sequence of eighth notes ascending and then descending, ending with a double bar line and a sharp sign.

A Major (A Concert)



A Major scale in treble clef, starting on A. The scale consists of 12 notes: A, B, C, D, E, F $\sharp$ , G $\sharp$ , A, B, C, D, E, F $\sharp$ . The notation shows a sequence of eighth notes ascending and then descending, ending with a double bar line and a sharp sign.

E Major (E Concert)



E Major scale in treble clef, starting on E. The scale consists of 12 notes: E, F $\sharp$ , G $\sharp$ , A, B, C, D, E, F $\sharp$ , G $\sharp$ , A, B, C, D. The notation shows a sequence of eighth notes ascending and then descending, ending with a double bar line and a sharp sign.

B Major (B Concert)



B Major scale in treble clef, starting on B. The scale consists of 12 notes: B, C, D, E, F $\sharp$ , G $\sharp$ , A, B, C, D, E, F $\sharp$ , G $\sharp$ . The notation shows a sequence of eighth notes ascending and then descending, ending with a double bar line and a sharp sign.

F $\sharp$  Major (F $\sharp$  Concert)



F $\sharp$  Major scale in treble clef, starting on F $\sharp$ . The scale consists of 12 notes: F $\sharp$ , G $\sharp$ , A, B, C, D, E, F $\sharp$ , G $\sharp$ , A, B, C, D, E. The notation shows a sequence of eighth notes ascending and then descending, ending with a double bar line and a sharp sign.